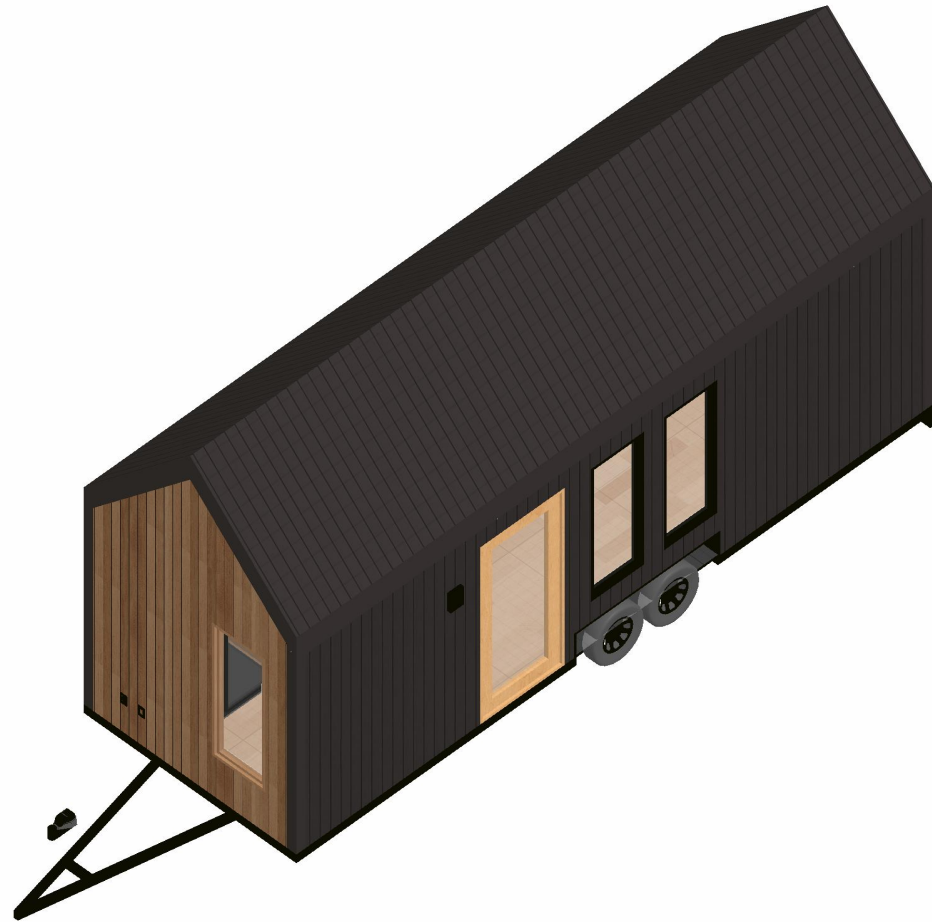


NORDIC WEEKENDER



Disclaimer: © 2022 Tiny Easy LTD - This Document was automatically generated using the 3D Tiny House Designer by Tiny Easy LTD and all copyright belongs to Tiny Easy LTD. Content made available on www.tinyeasy.co.nz is for general information purposes only. Although all Materials have been created by a team of knowledgeable design experts and regularly undergo reviews and updates, Materials are created for a large range of users from many different countries that all have different laws and requirements for tiny homes. Accordingly, the information contained in the Materials does not constitute architectural advice, nor are they a substitute for architectural advice. Furthermore, any assistance and customer support provided by us does not establish an architect-client relationship. Tiny Easy cannot guarantee the Materials will be compliant with any applicable law in your jurisdiction. Our Materials are intended to provide ideas and inspiration, but you cannot rely on the Materials for your tiny home project you must seek advice from engineers, licensed building practitioners, and/or architects in your country. Before purchasing any Materials it is your sole responsibility to determine the legal requirements and restrictions attached to tiny homes in your country and any compliance issues that you might encounter.

Name: Nordic Weekender

Scale: 1:50 (At A4)

System: Imperial (fr)

Plan: Front Left Isometric

1



Disclaimer: © 2022 Tiny Easy LTD - This Document was automatically generated using the 3D Tiny House Designer by Tiny Easy LTD and all copyright belongs to Tiny Easy LTD. Content made available on www.tinyeasy.co.nz is for general information purposes only. Although all Materials have been created by a team of knowledgeable design experts and regularly undergo reviews and updates, Materials are created for a large range of users from many different countries that all have different laws and requirements for tiny homes. Accordingly, the information contained in the Materials does not constitute architectural advice, nor are they a substitute for architectural advice. Furthermore, any assistance and customer support provided by us does not establish an architect-client relationship. Tiny Easy cannot guarantee the Materials will be compliant with any applicable law in your jurisdiction. Our Materials are intended to provide ideas and inspiration, but you cannot rely on the Materials for your tiny home project you must seek advice from engineers, licensed building practitioners, and/or architects in your country. Before purchasing any Materials it is your sole responsibility to determine the legal requirements and restrictions attached to tiny homes in your country and any compliance issues that you might encounter.

Name: Nordic Weekender

Scale: 1:50 (At A4)

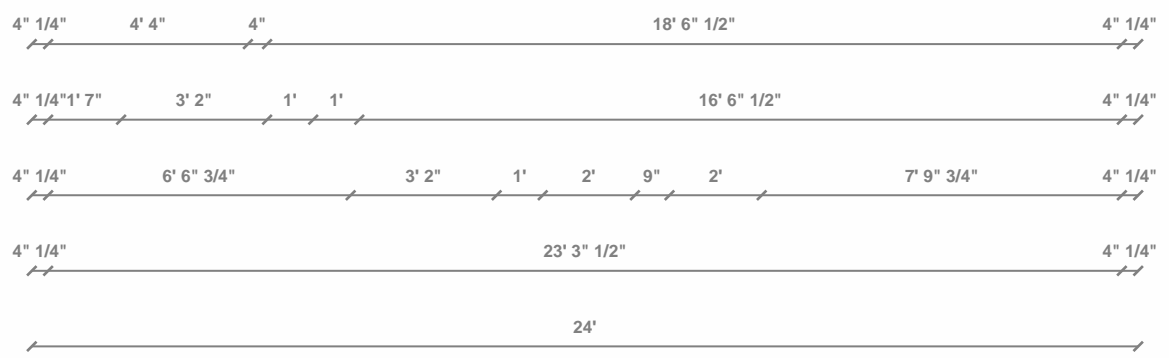
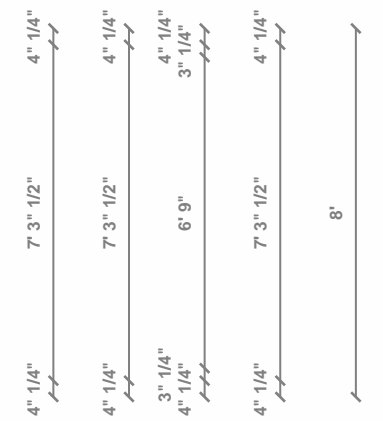
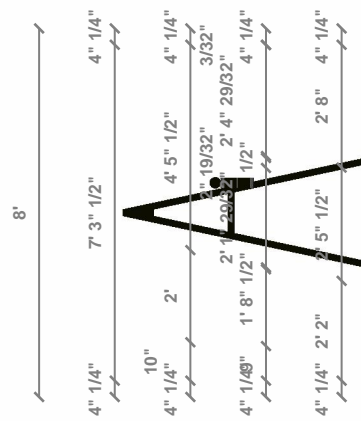
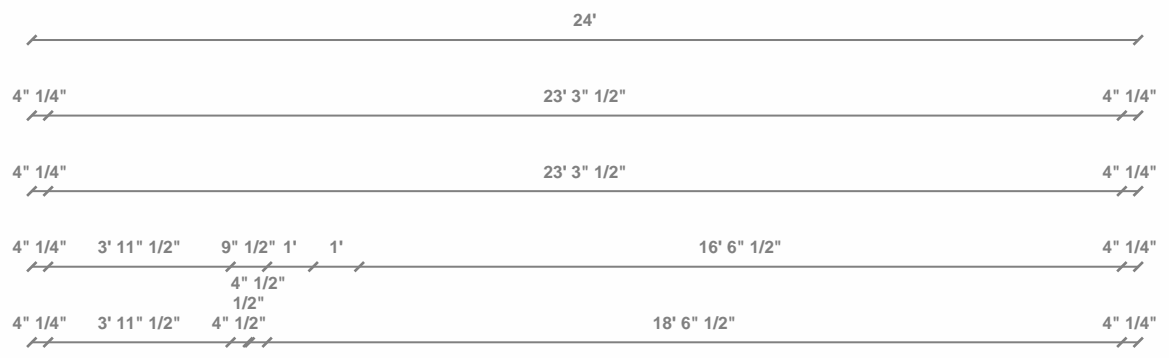
System: Imperial (fr)

Plan: Rear Right Isometric



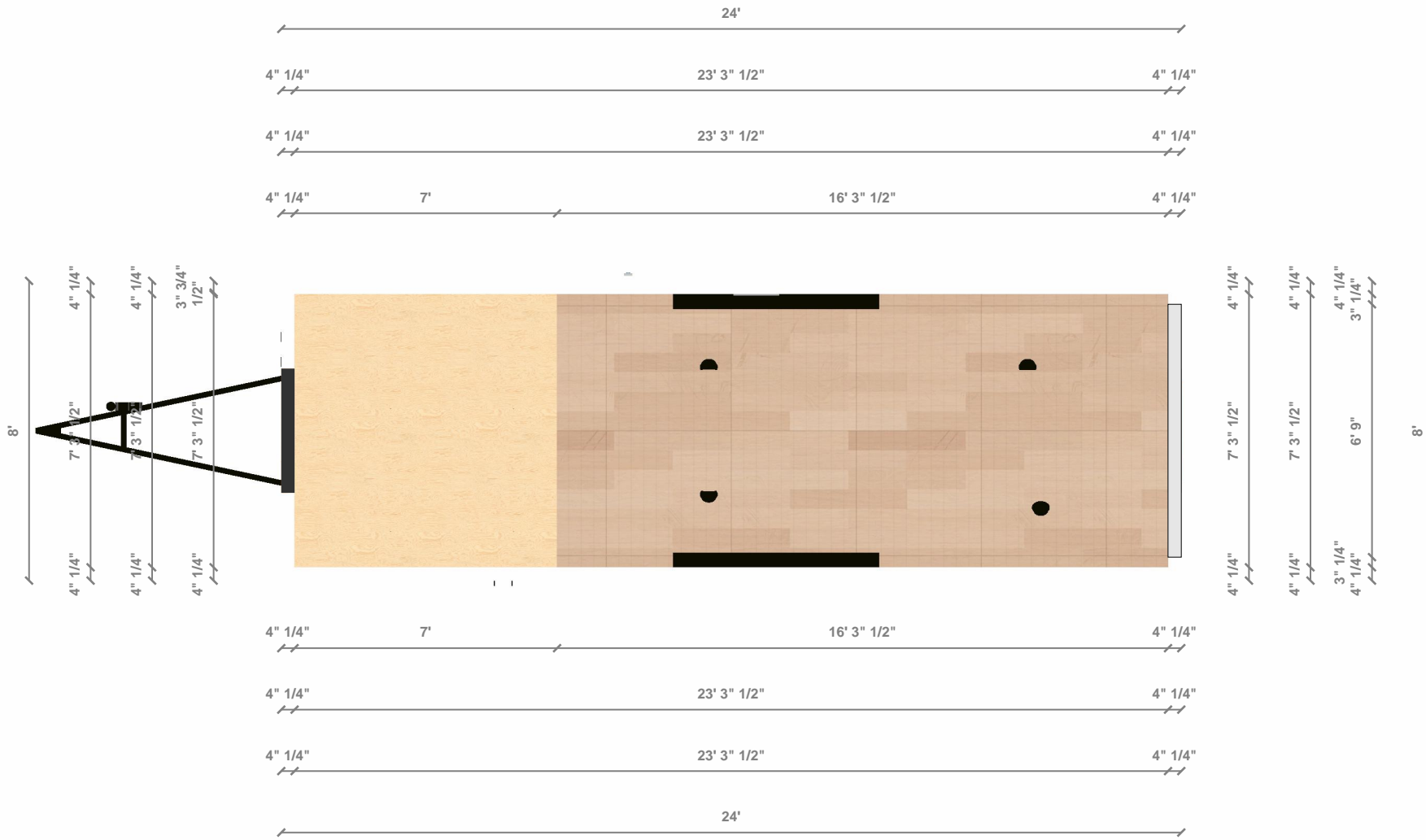
Disclaimer: © 2022 Tiny Easy LTD - This Document was automatically generated using the 3D Tiny House Designer by Tiny Easy LTD and all copyright belongs to Tiny Easy LTD. Content made available on www.tinyeasy.co.nz is for general information purposes only. Although all Materials have been created by a team of knowledgeable design experts and regularly undergo reviews and updates, Materials are created for a large range of users from many different countries that all have different laws and requirements for tiny homes. Accordingly, the information contained in the Materials does not constitute architectural advice, nor are they a substitute for architectural advice. Furthermore, any assistance and customer support provided by us does not establish an architect-client relationship. Tiny Easy cannot guarantee the Materials will be compliant with any applicable law in your jurisdiction. Our Materials are intended to provide ideas and inspiration, but you cannot rely on the Materials for your tiny home project you must seek advice from engineers, licensed building practitioners, and/or architects in your country. Before purchasing any Materials it is your sole responsibility to determine the legal requirements and restrictions attached to tiny homes in your country and any compliance issues that you might encounter.

Name: Nordic Weekender
Scale: 1:- (At A4)
System: Imperial (fr)
Plan: Exterior Perspectives



Disclaimer: © 2022 Tiny Easy LTD - This Document was automatically generated using the 3D Tiny House Designer by Tiny Easy LTD and all copyright belongs to Tiny Easy LTD. Content made available on www.tinyeasy.co.nz is for general information purposes only. Although all Materials have been created by a team of knowledgeable design experts and regularly undergo reviews and updates, Materials are created for a large range of users from many different countries that all have different laws and requirements for tiny homes. Accordingly, the information contained in the Materials does not constitute architectural advice, nor are they a substitute for architectural advice. Furthermore, any assistance and customer support provided by us does not establish an architect-client relationship. Tiny Easy cannot guarantee the Materials will be compliant with any applicable law in your jurisdiction. Our Materials are intended to provide ideas and inspiration, but you cannot rely on the Materials for your tiny home project you must seek advice from engineers, licensed building practitioners, and/or architects in your country. Before purchasing any Materials it is your sole responsibility to determine the legal requirements and restrictions attached to tiny homes in your country and any compliance issues that you might encounter.

Name: Nordic Weekender
 Scale: 1:50 (At A4)
 System: Imperial (fr)
 Plan: Floor Plan



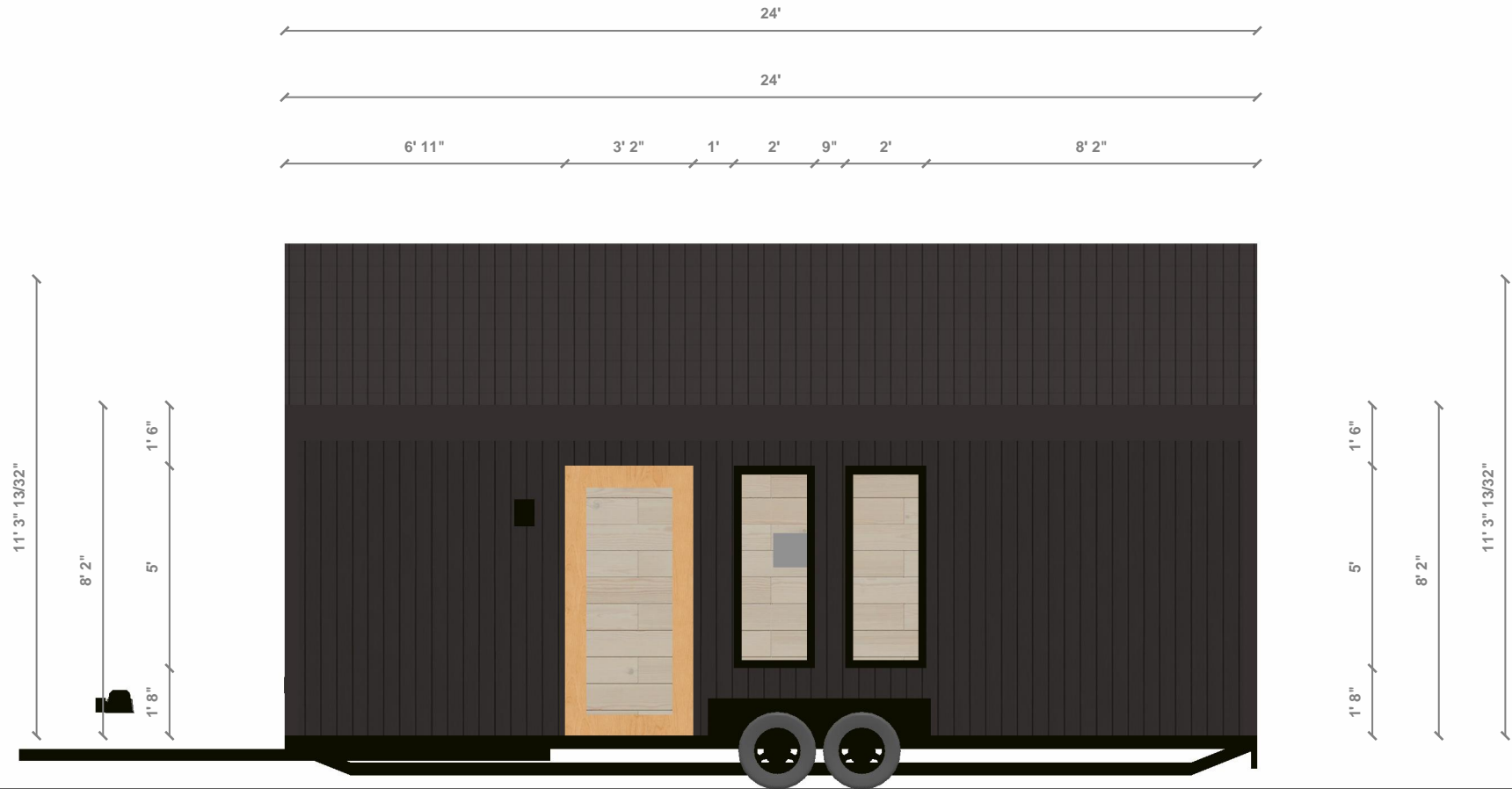
Disclaimer: © 2022 Tiny Easy LTD - This Document was automatically generated using the 3D Tiny House Designer by Tiny Easy LTD and all copyright belongs to Tiny Easy LTD. Content made available on www.tinyeasy.co.nz is for general information purposes only. Although all Materials have been created by a team of knowledgeable design experts and regularly undergo reviews and updates, Materials are created for a large range of users from many different countries that all have different laws and requirements for tiny homes. Accordingly, the information contained in the Materials does not constitute architectural advice, nor are they a substitute for architectural advice. Furthermore, any assistance and customer support provided by us does not establish an architect-client relationship. Tiny Easy cannot guarantee the Materials will be compliant with any applicable law in your jurisdiction. Our Materials are intended to provide ideas and inspiration, but you cannot rely on the Materials for your tiny home project you must seek advice from engineers, licensed building practitioners, and/or architects in your country. Before purchasing any Materials it is your sole responsibility to determine the legal requirements and restrictions attached to tiny homes in your country and any compliance issues that you might encounter.

Name: Nordic Weekender

Scale: 1:50 (At A4)

System: Imperial (fr)

Plan: Mezzanine Plan



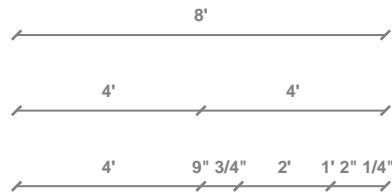
Disclaimer: © 2022 Tiny Easy LTD - This Document was automatically generated using the 3D Tiny House Designer by Tiny Easy LTD and all copyright belongs to Tiny Easy LTD. Content made available on www.tinyeasy.co.nz is for general information purposes only. Although all Materials have been created by a team of knowledgeable design experts and regularly undergo reviews and updates, Materials are created for a large range of users from many different countries that all have different laws and requirements for tiny homes. Accordingly, the information contained in the Materials does not constitute architectural advice, nor are they a substitute for architectural advice. Furthermore, any assistance and customer support provided by us does not establish an architect-client relationship. Tiny Easy cannot guarantee the Materials will be compliant with any applicable law in your jurisdiction. Our Materials are intended to provide ideas and inspiration, but you cannot rely on the Materials for your tiny home project you must seek advice from engineers, licensed building practitioners, and/or architects in your country. Before purchasing any Materials it is your sole responsibility to determine the legal requirements and restrictions attached to tiny homes in your country and any compliance issues that you might encounter.

Name: Nordic Weekender

Scale: 1:50 (At A4)

System: Imperial (fr)

Plan: Left Elevation



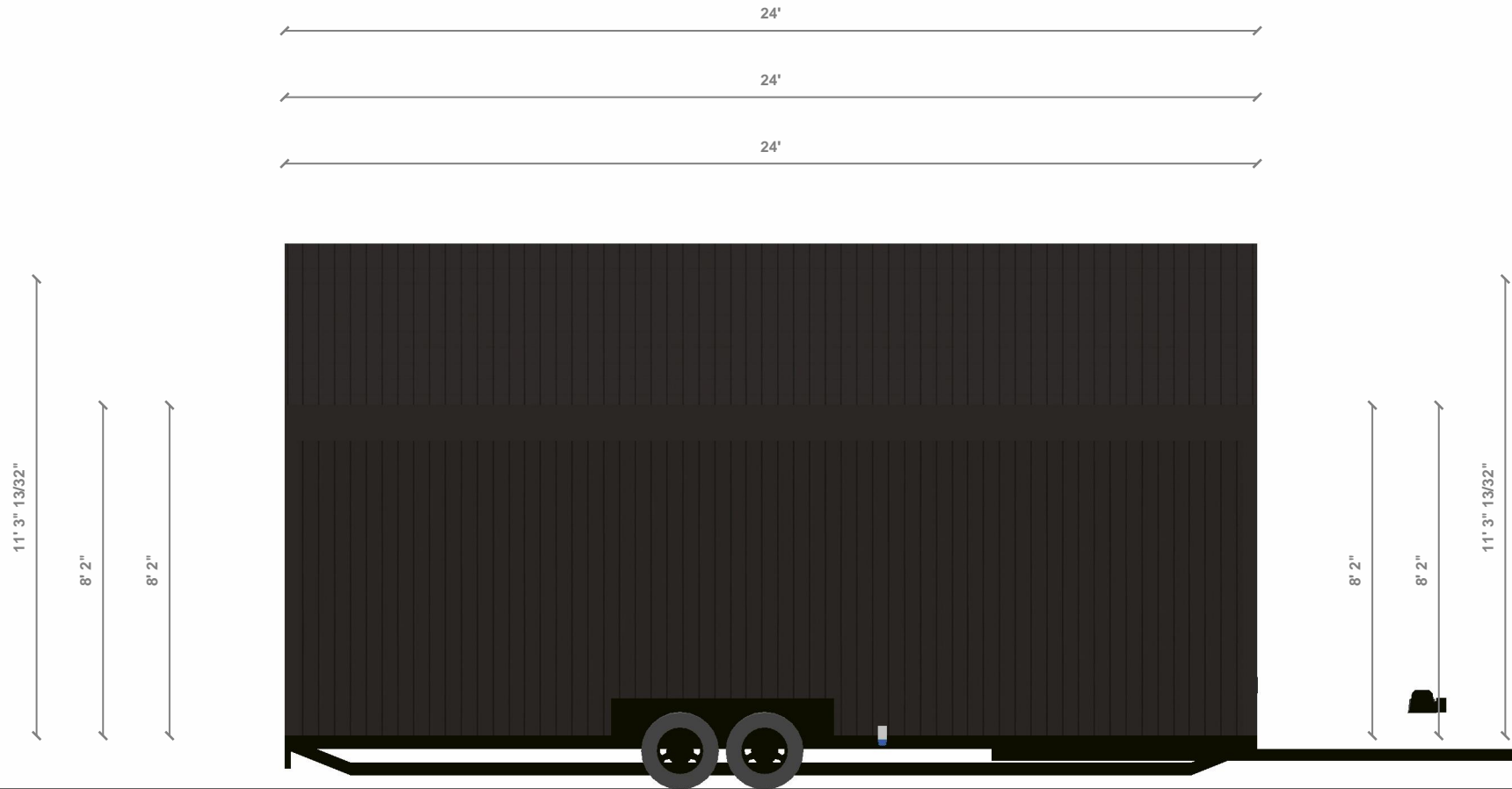
Disclaimer: © 2022 Tiny Easy LTD - This Document was automatically generated using the 3D Tiny House Designer by Tiny Easy LTD and all copyright belongs to Tiny Easy LTD. Content made available on www.tinyeasy.co.nz is for general information purposes only. Although all Materials have been created by a team of knowledgeable design experts and regularly undergo reviews and updates, Materials are created for a large range of users from many different countries that all have different laws and requirements for tiny homes. Accordingly, the information contained in the Materials does not constitute architectural advice, nor are they a substitute for architectural advice. Furthermore, any assistance and customer support provided by us does not establish an architect-client relationship. Tiny Easy cannot guarantee the Materials will be compliant with any applicable law in your jurisdiction. Our Materials are intended to provide ideas and inspiration, but you cannot rely on the Materials for your tiny home project you must seek advice from engineers, licensed building practitioners, and/or architects in your country. Before purchasing any Materials it is your sole responsibility to determine the legal requirements and restrictions attached to tiny homes in your country and any compliance issues that you might encounter.

Name: Nordic Weekender

Scale: 1:50 (At A4)

System: Imperial (fr)

Plan: Front Elevation



Disclaimer: © 2022 Tiny Easy LTD - This Document was automatically generated using the 3D Tiny House Designer by Tiny Easy LTD and all copyright belongs to Tiny Easy LTD. Content made available on www.tinyeasy.co.nz is for general information purposes only. Although all Materials have been created by a team of knowledgeable design experts and regularly undergo reviews and updates, Materials are created for a large range of users from many different countries that all have different laws and requirements for tiny homes. Accordingly, the information contained in the Materials does not constitute architectural advice, nor are they a substitute for architectural advice. Furthermore, any assistance and customer support provided by us does not establish an architect-client relationship. Tiny Easy cannot guarantee the Materials will be compliant with any applicable law in your jurisdiction. Our Materials are intended to provide ideas and inspiration, but you cannot rely on the Materials for your tiny home project you must seek advice from engineers, licensed building practitioners, and/or architects in your country. Before purchasing any Materials it is your sole responsibility to determine the legal requirements and restrictions attached to tiny homes in your country and any compliance issues that you might encounter.

Name: Nordic Weekender

Scale: 1:50 (At A4)

System: Imperial (fr)

Plan: Right Elevation



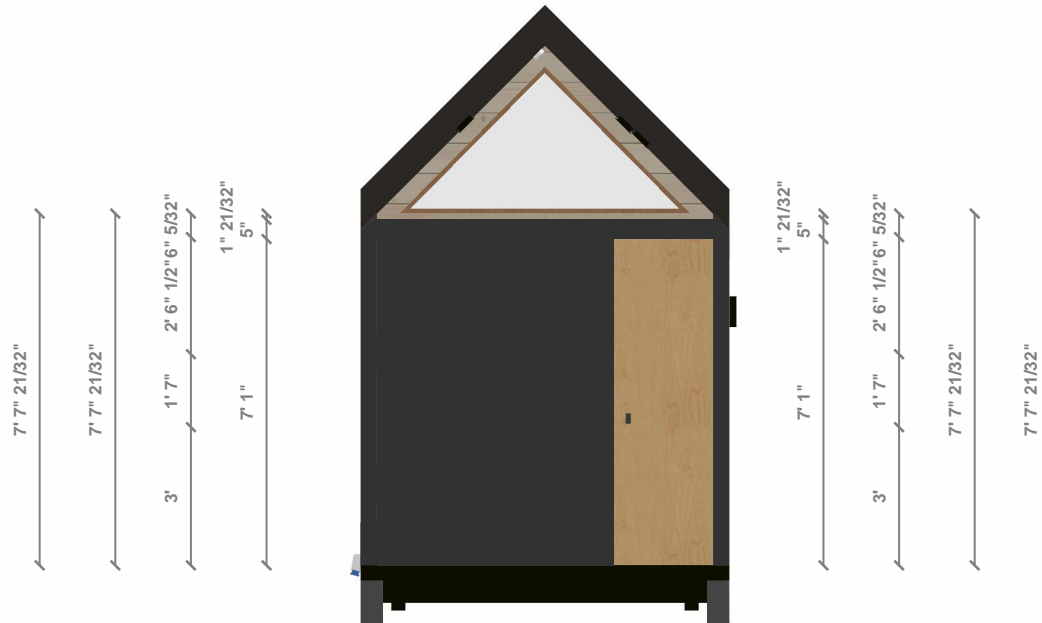
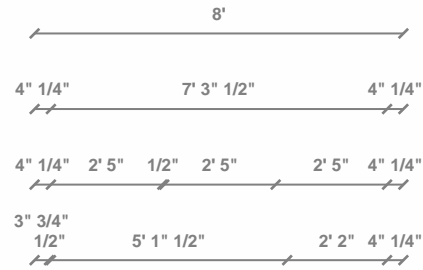
Disclaimer: © 2022 Tiny Easy LTD - This Document was automatically generated using the 3D Tiny House Designer by Tiny Easy LTD and all copyright belongs to Tiny Easy LTD. Content made available on www.tinyeasy.co.nz is for general information purposes only. Although all Materials have been created by a team of knowledgeable design experts and regularly undergo reviews and updates, Materials are created for a large range of users from many different countries that all have different laws and requirements for tiny homes. Accordingly, the information contained in the Materials does not constitute architectural advice, nor are they a substitute for architectural advice. Furthermore, any assistance and customer support provided by us does not establish an architect-client relationship. Tiny Easy cannot guarantee the Materials will be compliant with any applicable law in your jurisdiction. Our Materials are intended to provide ideas and inspiration, but you cannot rely on the Materials for your tiny home project you must seek advice from engineers, licensed building practitioners, and/or architects in your country. Before purchasing any Materials it is your sole responsibility to determine the legal requirements and restrictions attached to tiny homes in your country and any compliance issues that you might encounter.

Name: Nordic Weekender

Scale: 1:50 (At A4)

System: Imperial (fr)

Plan: Left Section



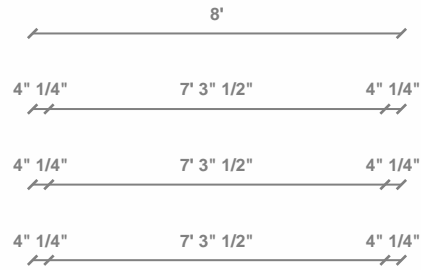
Disclaimer: © 2022 Tiny Easy LTD - This Document was automatically generated using the 3D Tiny House Designer by Tiny Easy LTD and all copyright belongs to Tiny Easy LTD. Content made available on www.tinyeasy.co.nz is for general information purposes only. Although all Materials have been created by a team of knowledgeable design experts and regularly undergo reviews and updates, Materials are created for a large range of users from many different countries that all have different laws and requirements for tiny homes. Accordingly, the information contained in the Materials does not constitute architectural advice, nor are they a substitute for architectural advice. Furthermore, any assistance and customer support provided by us does not establish an architect-client relationship. Tiny Easy cannot guarantee the Materials will be compliant with any applicable law in your jurisdiction. Our Materials are intended to provide ideas and inspiration, but you cannot rely on the Materials for your tiny home project you must seek advice from engineers, licensed building practitioners, and/or architects in your country. Before purchasing any Materials it is your sole responsibility to determine the legal requirements and restrictions attached to tiny homes in your country and any compliance issues that you might encounter.

Name: Nordic Weekender

Scale: 1:50 (At A4)

System: Imperial (fr)

Plan: Front Section



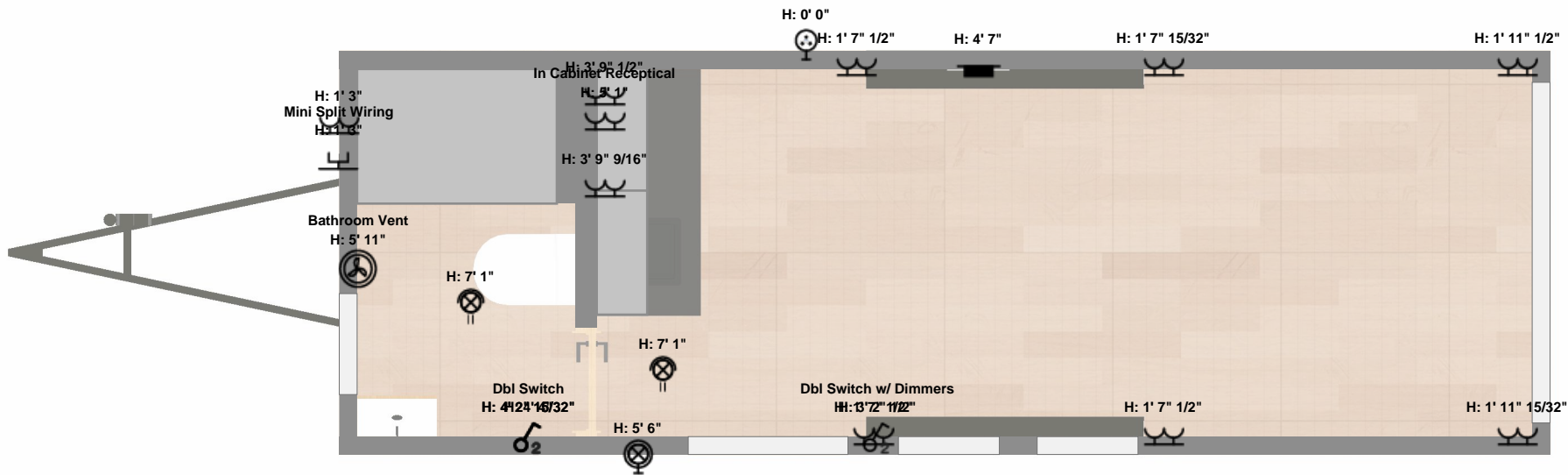
Disclaimer: © 2022 Tiny Easy LTD - This Document was automatically generated using the 3D Tiny House Designer by Tiny Easy LTD and all copyright belongs to Tiny Easy LTD. Content made available on www.tinyeasy.co.nz is for general information purposes only. Although all Materials have been created by a team of knowledgeable design experts and regularly undergo reviews and updates, Materials are created for a large range of users from many different countries that all have different laws and requirements for tiny homes. Accordingly, the information contained in the Materials does not constitute architectural advice, nor are they a substitute for architectural advice. Furthermore, any assistance and customer support provided by us does not establish an architect-client relationship. Tiny Easy cannot guarantee the Materials will be compliant with any applicable law in your jurisdiction. Our Materials are intended to provide ideas and inspiration, but you cannot rely on the Materials for your tiny home project you must seek advice from engineers, licensed building practitioners, and/or architects in your country. Before purchasing any Materials it is your sole responsibility to determine the legal requirements and restrictions attached to tiny homes in your country and any compliance issues that you might encounter.

Name: Nordic Weekender

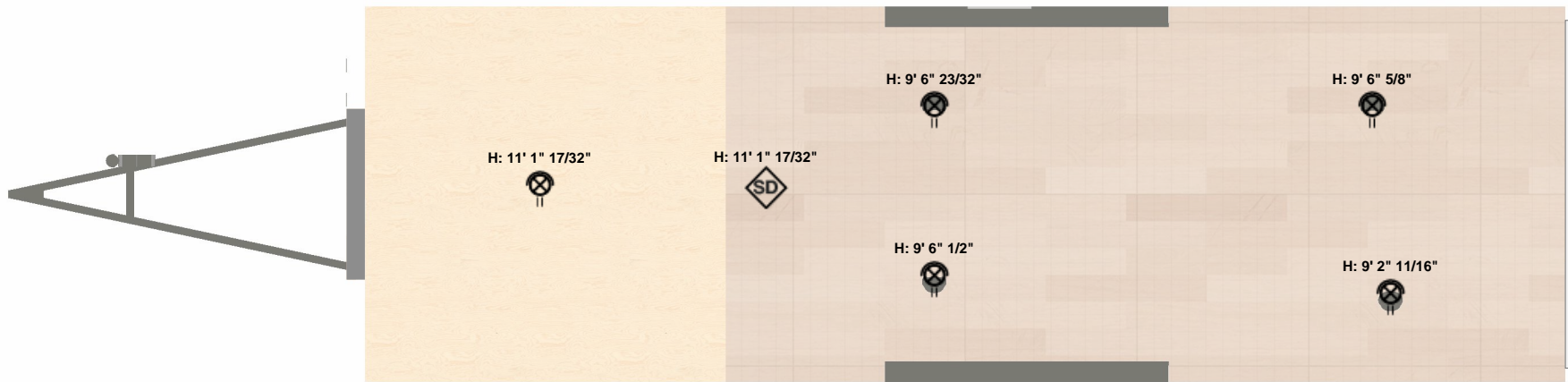
Scale: 1:50 (At A4)

System: Imperial (fr)

Plan: Rear Section

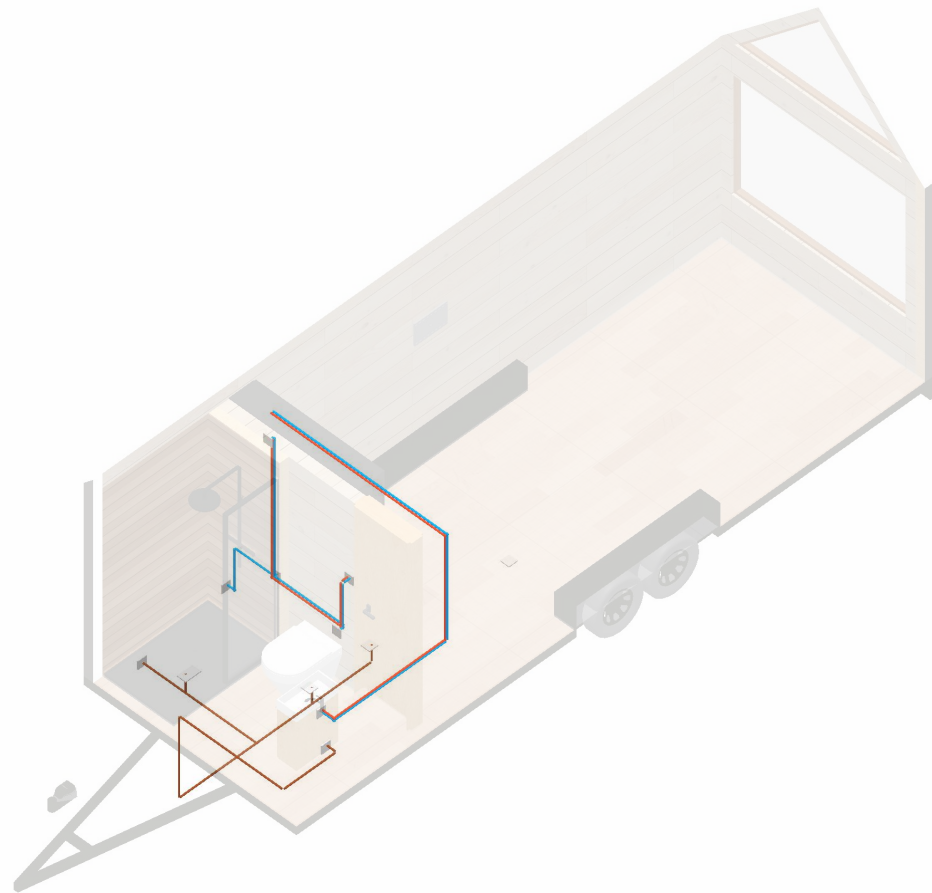


Icon	Item Name	No.	Icon	Item Name	No.	Icon	Item Name	No.	Icon	Item Name	No.	Icon	Item Name	No.
	SingleSwitch	0		DoubleOutlet	10		ExteriorOutlet	0		RailLight	0		CaravanPlug	1
	DoubleSwitch	4		UsbOutlet	0		DownLight	7		OutdoorLight	1		MainPowerIn	0
	TripleSwitch	0		TvOutlet	0		PendantLight	0		ThroughWallFan	1		SwitchBoard	1
	QuadSwitch	0		Brushplate	1		WallMountedLight	0		Heatpump	0		SmokeDetector	1
	DimmerSwitch	0		EthernetOutlet	0		MirrorLight	0		SmartController	0		CarbonMonoxideDet	0
	SingleOutlet	0		HdmiOutlet	0		StripLight	0		HotWaterHeater	0		Other	0



Icon	Item Name	No.	Icon	Item Name	No.	Icon	Item Name	No.	Icon	Item Name	No.	Icon	Item Name	No.
	SingleSwitch	0		DoubleOutlet	10		ExteriorOutlet	0		RailLight	0		CaravanPlug	1
	DoubleSwitch	4		UsbOutlet	0		DownLight	7		OutdoorLight	1		MainPowerIn	0
	TripleSwitch	0		TvOutlet	0		PendantLight	0		ThroughWallFan	1		SwitchBoard	1
	QuadSwitch	0		Brushplate	1		WallMountedLight	0		Heatpump	0		SmokeDetector	1
	DimmerSwitch	0		EthernetOutlet	0		MirrorLight	0		SmartController	0		CarbonMonoxideDet	0
	SingleOutlet	0		HdmiOutlet	0		StripLight	0		HotWaterHeater	0		Other	0

Unique Name	Notes	Unique Name	Notes	Unique Name	Notes
DbI Switch	Bathroom Light and fan				



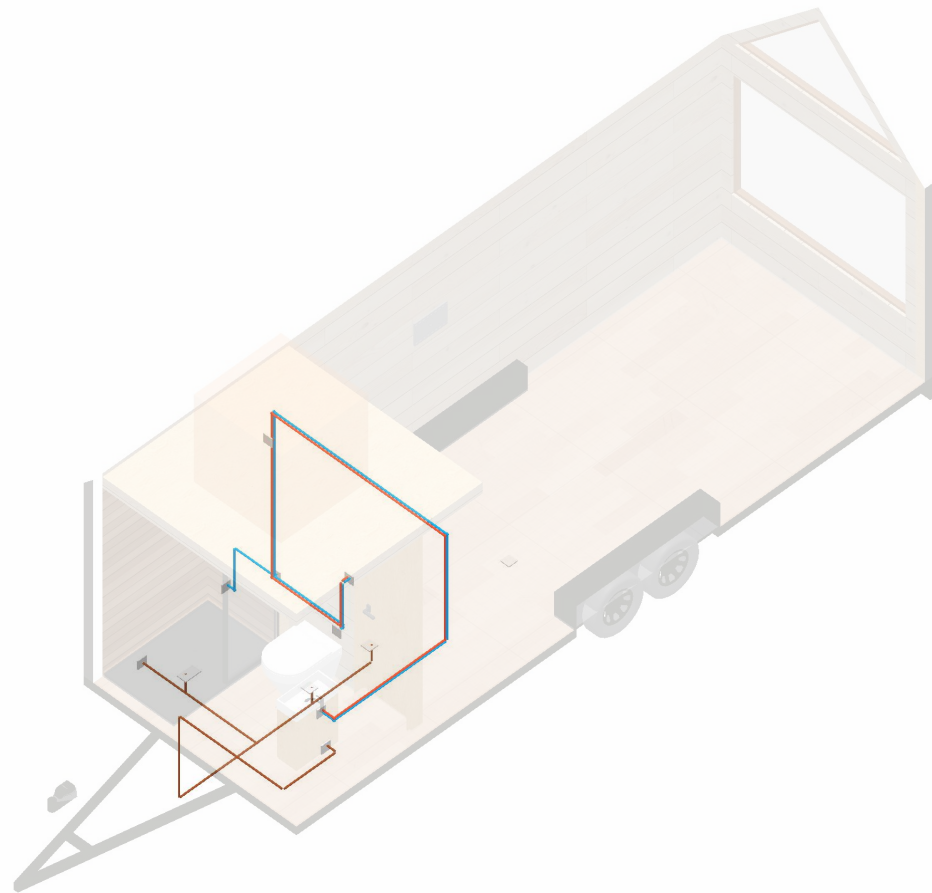
Disclaimer: © 2022 Tiny Easy LTD - This Document was automatically generated using the 3D Tiny House Designer by Tiny Easy LTD and all copyright belongs to Tiny Easy LTD. Content made available on www.tinyeasy.co.nz is for general information purposes only. Although all Materials have been created by a team of knowledgeable design experts and regularly undergo reviews and updates, Materials are created for a large range of users from many different countries that all have different laws and requirements for tiny homes. Accordingly, the information contained in the Materials does not constitute architectural advice, nor are they a substitute for architectural advice. Furthermore, any assistance and customer support provided by us does not establish an architect-client relationship. Tiny Easy cannot guarantee the Materials will be compliant with any applicable law in your jurisdiction. Our Materials are intended to provide ideas and inspiration, but you cannot rely on the Materials for your tiny home project you must seek advice from engineers, licensed building practitioners, and/or architects in your country. Before purchasing any Materials it is your sole responsibility to determine the legal requirements and restrictions attached to tiny homes in your country and any compliance issues that you might encounter.

Name: Nordic Weekender

Scale: 1:50 (At A4)

System: Imperial (fr)

Plan: Front Left Plumbing



Disclaimer: © 2022 Tiny Easy LTD - This Document was automatically generated using the 3D Tiny House Designer by Tiny Easy LTD and all copyright belongs to Tiny Easy LTD. Content made available on www.tinyeasy.co.nz is for general information purposes only. Although all Materials have been created by a team of knowledgeable design experts and regularly undergo reviews and updates, Materials are created for a large range of users from many different countries that all have different laws and requirements for tiny homes. Accordingly, the information contained in the Materials does not constitute architectural advice, nor are they a substitute for architectural advice. Furthermore, any assistance and customer support provided by us does not establish an architect-client relationship. Tiny Easy cannot guarantee the Materials will be compliant with any applicable law in your jurisdiction. Our Materials are intended to provide ideas and inspiration, but you cannot rely on the Materials for your tiny home project you must seek advice from engineers, licensed building practitioners, and/or architects in your country. Before purchasing any Materials it is your sole responsibility to determine the legal requirements and restrictions attached to tiny homes in your country and any compliance issues that you might encounter.

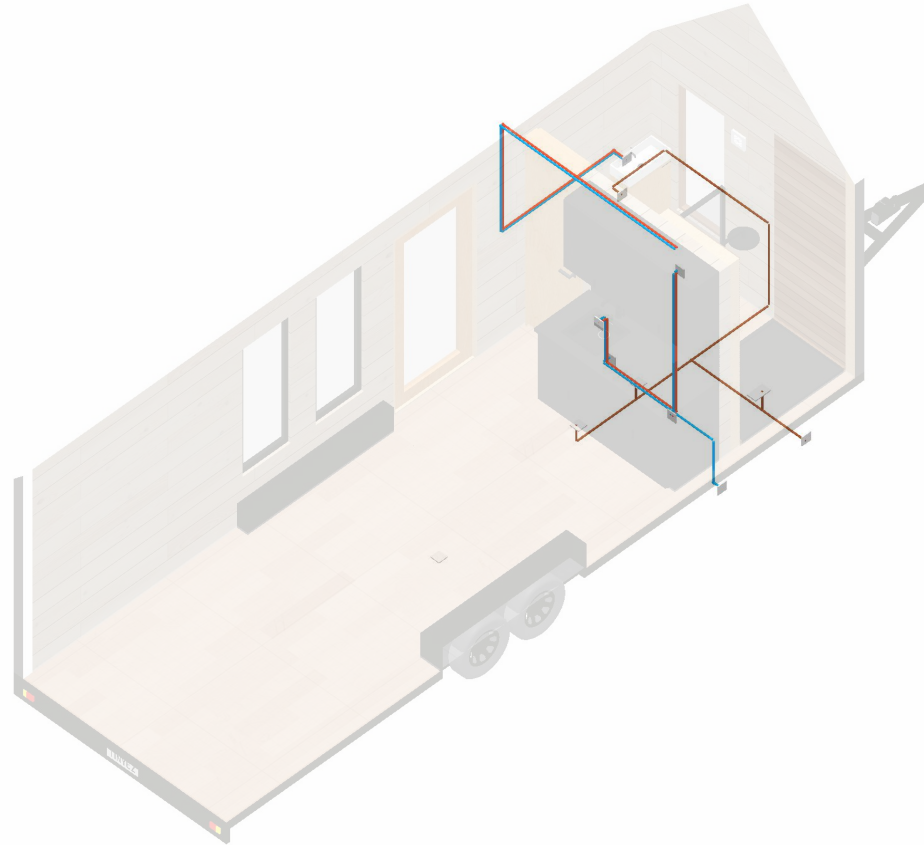
Name: Nordic Weekender

Scale: 1:50 (At A4)

System: Imperial (fr)

Plan: Front Left w Loft Plumbing

19



Disclaimer: © 2022 Tiny Easy LTD - This Document was automatically generated using the 3D Tiny House Designer by Tiny Easy LTD and all copyright belongs to Tiny Easy LTD. Content made available on www.tinyeasy.co.nz is for general information purposes only. Although all Materials have been created by a team of knowledgeable design experts and regularly undergo reviews and updates, Materials are created for a large range of users from many different countries that all have different laws and requirements for tiny homes. Accordingly, the information contained in the Materials does not constitute architectural advice, nor are they a substitute for architectural advice. Furthermore, any assistance and customer support provided by us does not establish an architect-client relationship. Tiny Easy cannot guarantee the Materials will be compliant with any applicable law in your jurisdiction. Our Materials are intended to provide ideas and inspiration, but you cannot rely on the Materials for your tiny home project you must seek advice from engineers, licensed building practitioners, and/or architects in your country. Before purchasing any Materials it is your sole responsibility to determine the legal requirements and restrictions attached to tiny homes in your country and any compliance issues that you might encounter.

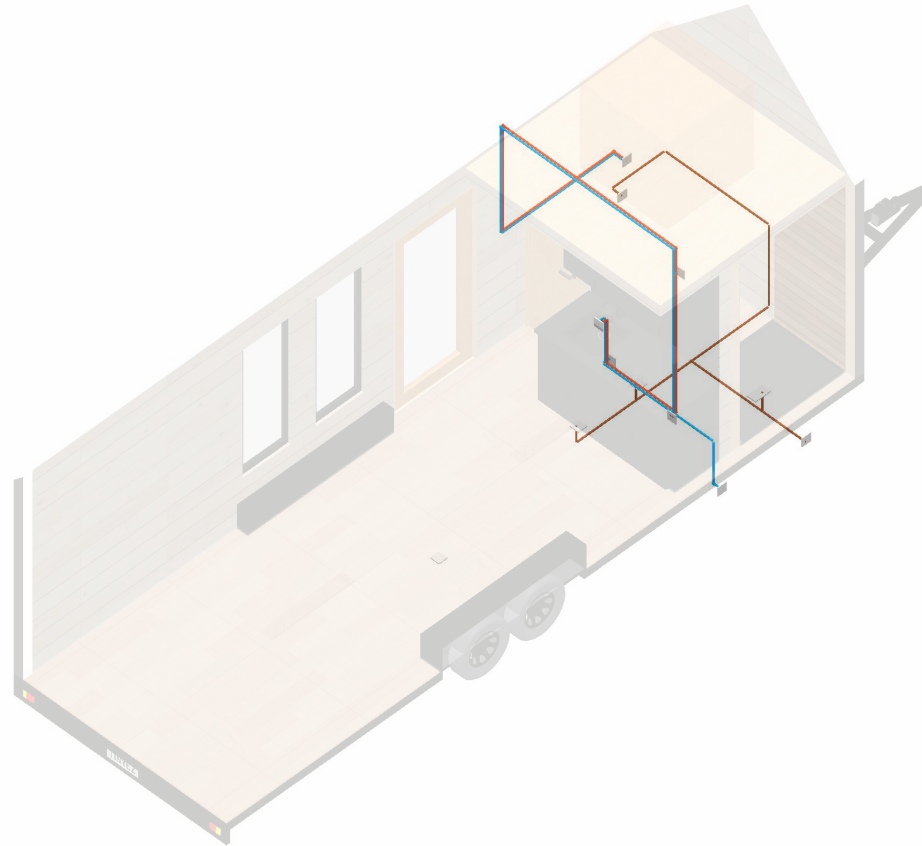
Name: Nordic Weekender

Scale: 1:50 (At A4)

System: Imperial (fr)

Plan: Rear Right Plumbing

20



Disclaimer: © 2022 Tiny Easy LTD - This Document was automatically generated using the 3D Tiny House Designer by Tiny Easy LTD and all copyright belongs to Tiny Easy LTD. Content made available on www.tinyeasy.co.nz is for general information purposes only. Although all Materials have been created by a team of knowledgeable design experts and regularly undergo reviews and updates, Materials are created for a large range of users from many different countries that all have different laws and requirements for tiny homes. Accordingly, the information contained in the Materials does not constitute architectural advice, nor are they a substitute for architectural advice. Furthermore, any assistance and customer support provided by us does not establish an architect-client relationship. Tiny Easy cannot guarantee the Materials will be compliant with any applicable law in your jurisdiction. Our Materials are intended to provide ideas and inspiration, but you cannot rely on the Materials for your tiny home project you must seek advice from engineers, licensed building practitioners, and/or architects in your country. Before purchasing any Materials it is your sole responsibility to determine the legal requirements and restrictions attached to tiny homes in your country and any compliance issues that you might encounter.

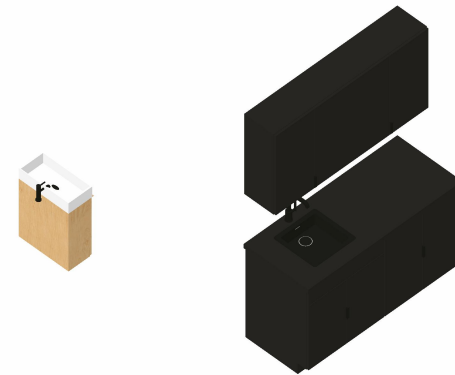
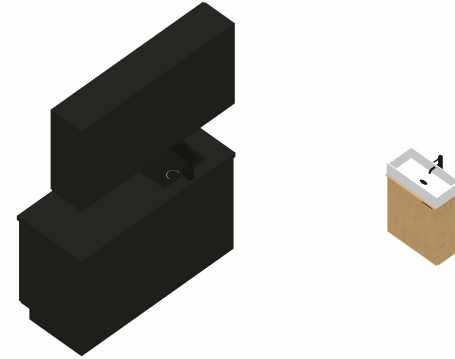
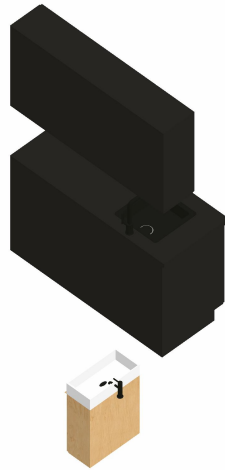
Name: Nordic Weekender

Scale: 1:50 (At A4)

System: Imperial (fr)

Plan: Rear Right Plumbing

21



Disclaimer: © 2022 Tiny Easy LTD - This Document was automatically generated using the 3D Tiny House Designer by Tiny Easy LTD and all copyright belongs to Tiny Easy LTD. Content made available on www.tinyeasy.co.nz is for general information purposes only. Although all Materials have been created by a team of knowledgeable design experts and regularly undergo reviews and updates, Materials created for a large range of users from many different countries that all have different laws and requirements for tiny homes. Accordingly, the information contained in the Materials does not constitute architectural advice, nor are they a substitute for architectural advice. Furthermore, any assistance and customer support provided by us does not establish an architect-client relationship. Tiny Easy cannot guarantee the Materials will be compliant with any applicable law in your jurisdiction. Our Materials are intended to provide ideas and inspiration, but you cannot rely on the Materials for your tiny home project you must seek advice from engineers, licensed building practitioners, and/or architects in your country. Before purchasing any Materials it is your sole responsibility to determine the legal requirements and restrictions attached to tiny homes in your country and any compliance issues that you might encounter.

Name: Nordic Weekender

Scale: 1:50 (At A4)

System: Imperial (fr)

Plan: Cabinet Isometrics

22

1' 1'



1/2" 2' 4" 1/2" 2' 5" 1/2"

9"



1' 7" 3' 2" 1' 1'



Disclaimer: © 2022 Tiny Easy LTD - This Document was automatically generated using the 3D Tiny House Designer by Tiny Easy LTD and all copyright belongs to Tiny Easy LTD. Content made available on www.tinyeasy.co.nz is for general information purposes only. Although all Materials have been created by a team of knowledgeable design experts and regularly undergo reviews and updates, Materials are created for a large range of users from many different countries that all have different laws and requirements for tiny homes. Accordingly, the information contained in the Materials does not constitute architectural advice, nor are they a substitute for architectural advice. Furthermore, any assistance and customer support provided by us does not establish an architect-client relationship. Tiny Easy cannot guarantee the Materials will be compliant with any applicable law in your jurisdiction. Our Materials are intended to provide ideas and inspiration, but you cannot rely on the Materials for your tiny home project you must seek advice from engineers, licensed building practitioners, and/or architects in your country. Before purchasing any Materials it is your sole responsibility to determine the legal requirements and restrictions attached to tiny homes in your country and any compliance issues that you might encounter.

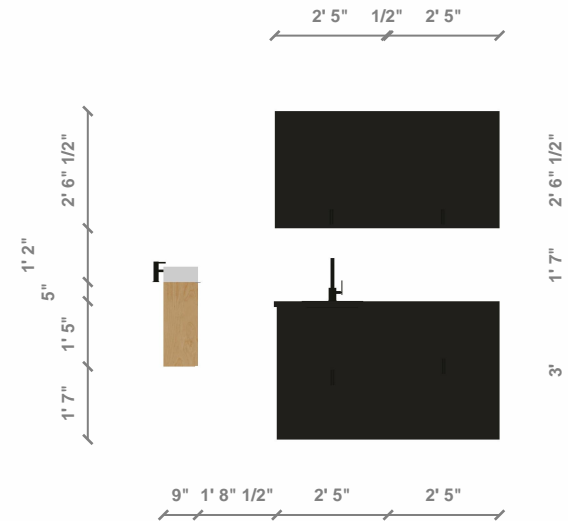
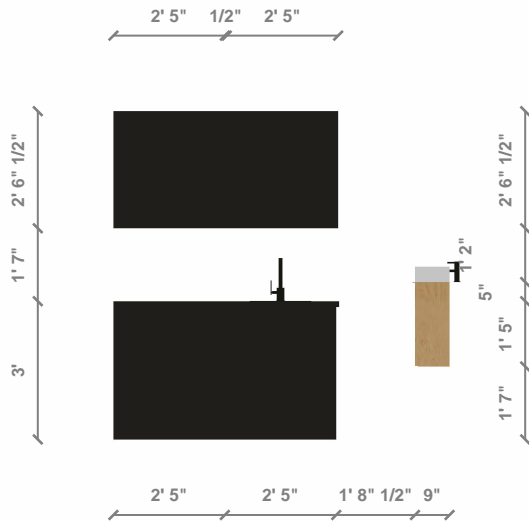
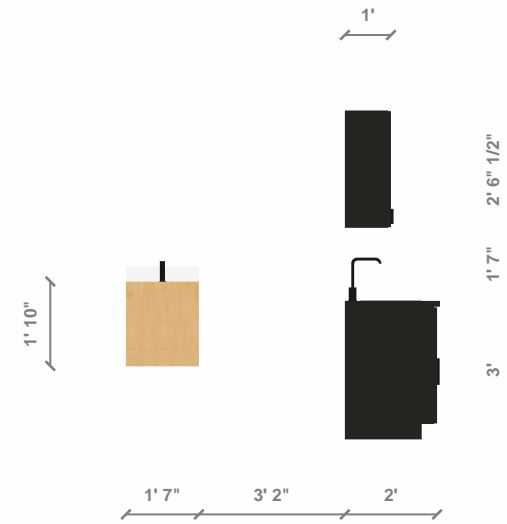
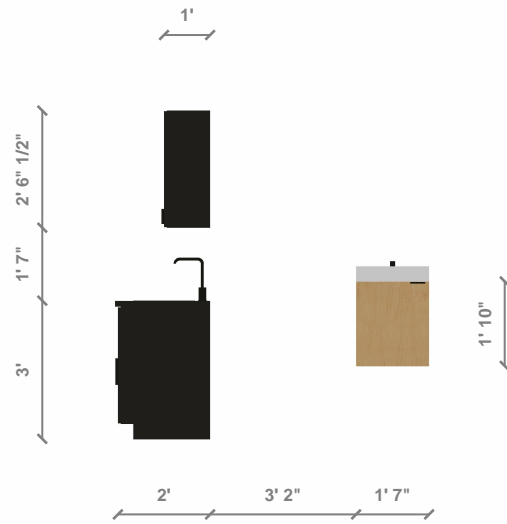
Name: Nordic Weekender

Scale: 1:25 (At A4)

System: Imperial (fr)

Plan: Cabinet Plan

23



Disclaimer: © 2022 Tiny Easy LTD - This Document was automatically generated using the 3D Tiny House Designer by Tiny Easy LTD and all copyright belongs to Tiny Easy LTD. Content made available on www.tinyeasy.co.nz is for general information purposes only. Although all Materials have been created by a team of knowledgeable design experts and regularly undergo reviews and updates, Materials are created for a large range of users from many different countries that all have different laws and requirements for tiny homes. Accordingly, the information contained in the Materials does not constitute architectural advice, nor are they a substitute for architectural advice. Furthermore, any assistance and customer support provided by us does not establish an architect-client relationship. Tiny Easy cannot guarantee the Materials will be compliant with any applicable law in your jurisdiction. Our Materials are intended to provide ideas and inspiration, but you cannot rely on the Materials for your tiny home project you must seek advice from engineers, licensed building practitioners, and/or architects in your country. Before purchasing any Materials it is your sole responsibility to determine the legal requirements and restrictions attached to tiny homes in your country and any compliance issues that you might encounter.

Name: Nordic Weekender

Scale: 1:25 (At A4)

System: Imperial (fr)

Plan: Cabinet Elevations